

sixteen™  
on smallwood

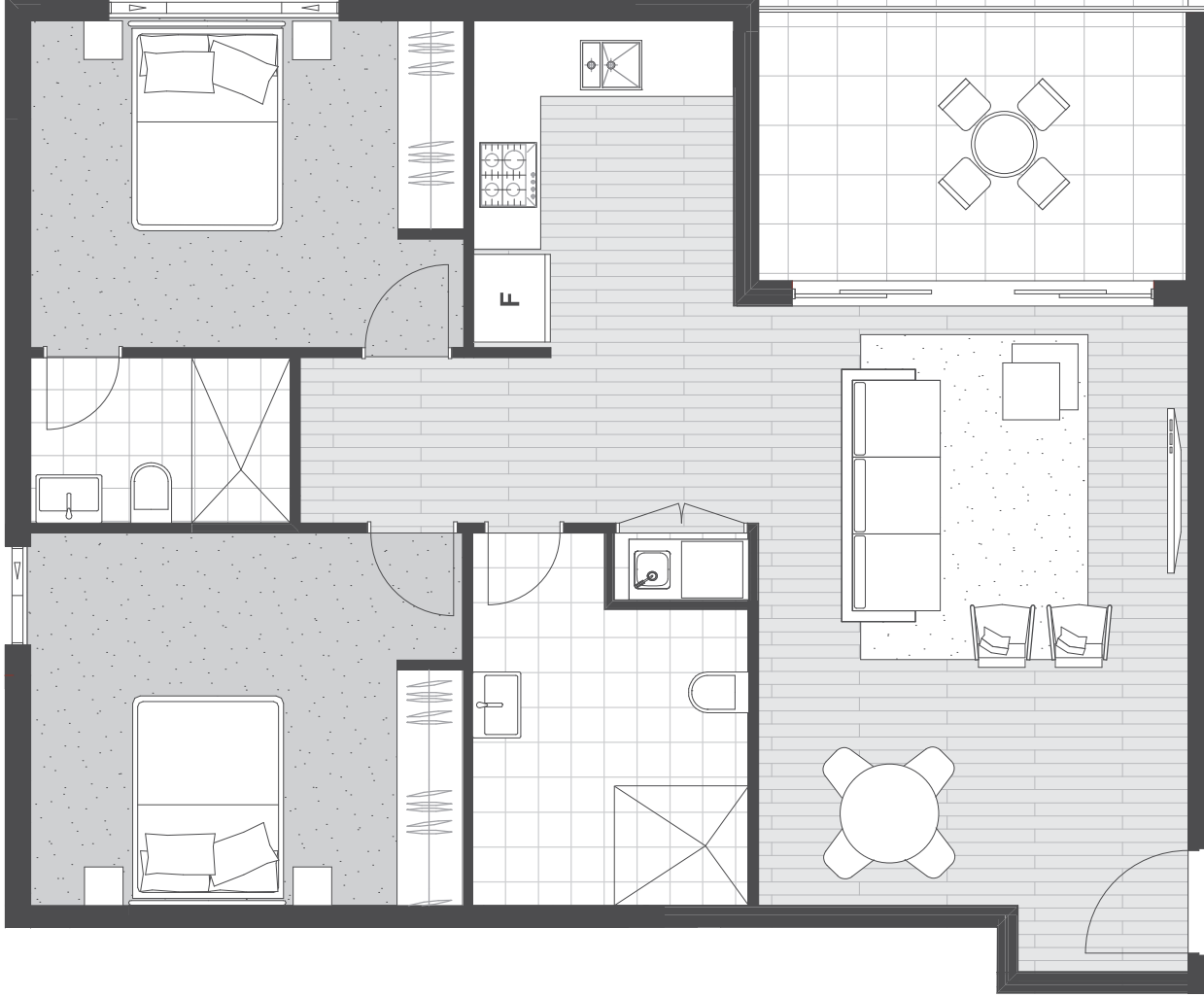
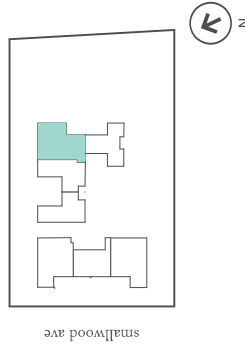
*Life begins at sixteen.*

apartment  
506, 606,  
706

2 

2 

internal	75-76m <sup>2</sup>
external	10-11m <sup>2</sup>
total	85-87m <sup>2</sup>



DISCLAIMER: Please note that this floor plan was produced prior to construction and is subject to council approval. The information herein is believed to be correct but is not guaranteed. Changes may be made during construction and dimensions, areas, fittings and specifications are subject change without notice. This floor plan is not intended to be used for any other purpose. All dimensions are approximate and are subject to final survey. TV connection points and the like. Prospective purchasers must rely on their own enquiries. All graphics including tile layout, joinery layout, basins, kitchen equipment, balustrades and the like are indicative only. Balustrades for services are not depicted. Floor plan is at an unspecified scale. All area sizes indicated are approximate only and are subject to final survey.

sixteenonsmallwood.com.au

