

sixteen™
on smallwood

Life begins at sixteen.

apartment
**501, 601,
701**

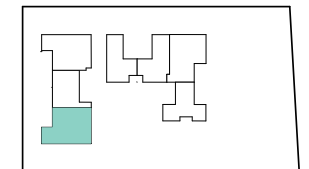
2 

2 

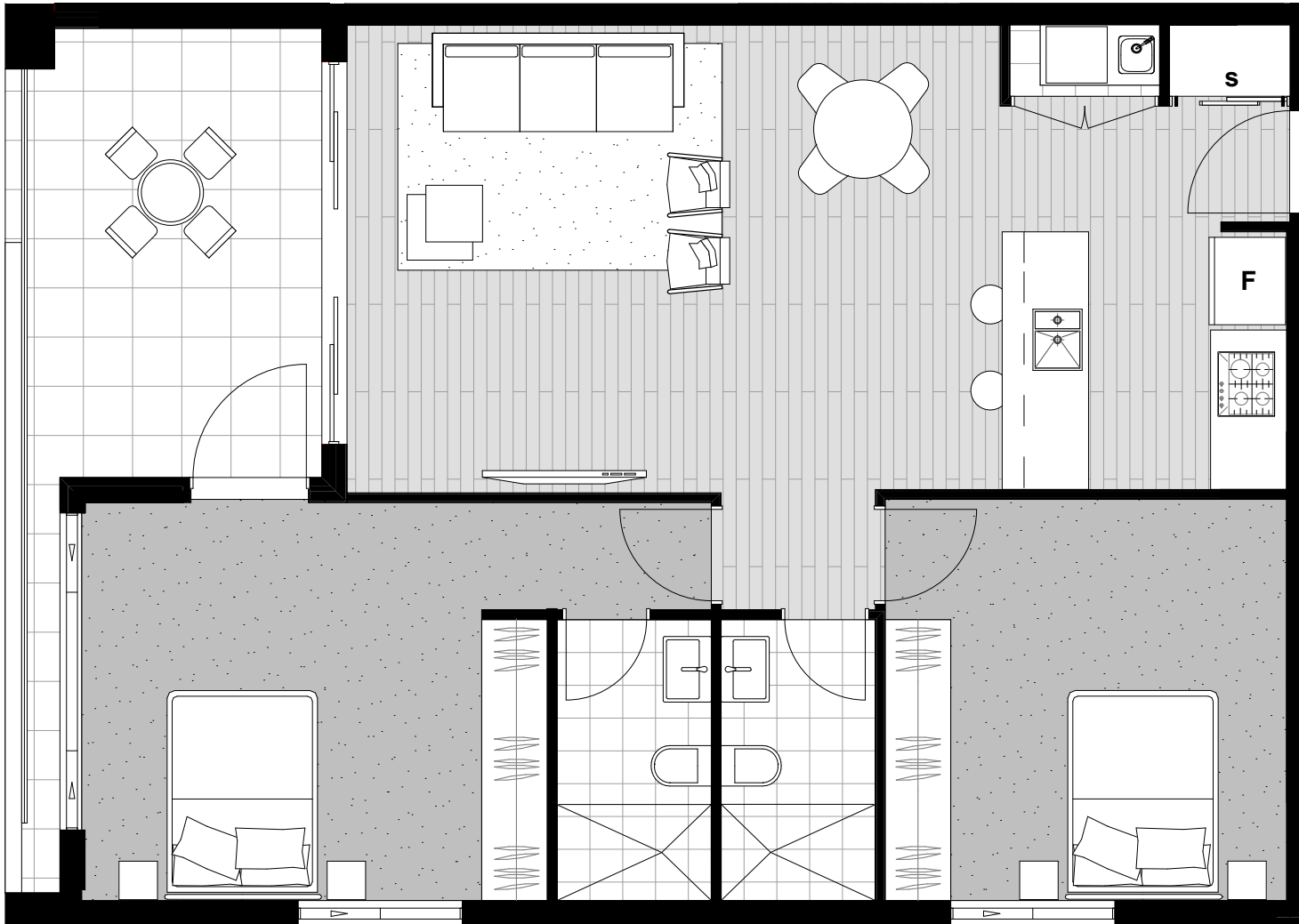
internal 77m²

external 10-12m²

total 87-89m²



smallwood ave



sixteenonsmallwood.com.au

 Landcon.

DISCLAIMER: Please note that this floor plan was produced prior to construction and is subject to council approval. The information herein is believed to be correct but is not guaranteed. Changes may be made during construction and dimensions, areas, fittings and specifications are subject change without notice in accordance with the provisions of the contract of sale. The furniture and furnishings depicted are not included with any sale and purchasers must refer to the contract for sale for the list of inclusions. The position of furniture and furnishings should not be taken to be indicative of final positions of power points, TV connection points and the like. Prospective purchasers must rely on their own enquiries. All graphics including tile layout, joinery layout, basins, kitchen equipment, balustrades and the like are indicative only. Bulkheads for services are not depicted. Floor plan is at an unspecified scale. All area sizes indicated are approximate only and are subject to final survey.