

# Sewer Service Diagram

Application Number: 8002901748

**SEWERAGE SERVICE DIAGRAM** MWS 6.03

MUNICIPALITY OF RYDE SUBURB OF Ryde Copy of Diagram No 915636

**SYMBOLS AND ABBREVIATIONS**

<b>INDICATES DRAINAGE FITTINGS</b>		<b>INDICATES PLUMBING FIXTURES &amp; OR FITTINGS</b>	
□ Manhole	□ P Trap	CO Clean Out	Bel Bdr
□ Chamber	□ R Toilet Valve	Q V Vent Pipe	S Shower
□ L/H Lateral	○ Cheyng Eye	T Tube	OW Outwater
□ Boundary Lap	D Vert Vertical Pipe	K Kitchen Sink	F Floor Waste
□ Inspection Shaft	P Induc Pipe	W Wtr Closet	M Washing Machine
□ Pit	MU Man Trap	B Bath Waste	BS Bat Sink
□ Gully Interceptor	JN Junction	H Handbasin	LS Lat Sink
□ Gully	* RP Rodding Point	H Handbasin	IS Urinal
		O SV Sol Vent Pipe	INDICATES PLUMBING ON MORE THAN ONE LEVEL
			D WS Waste Stack

**SEWER AVAILABLE**

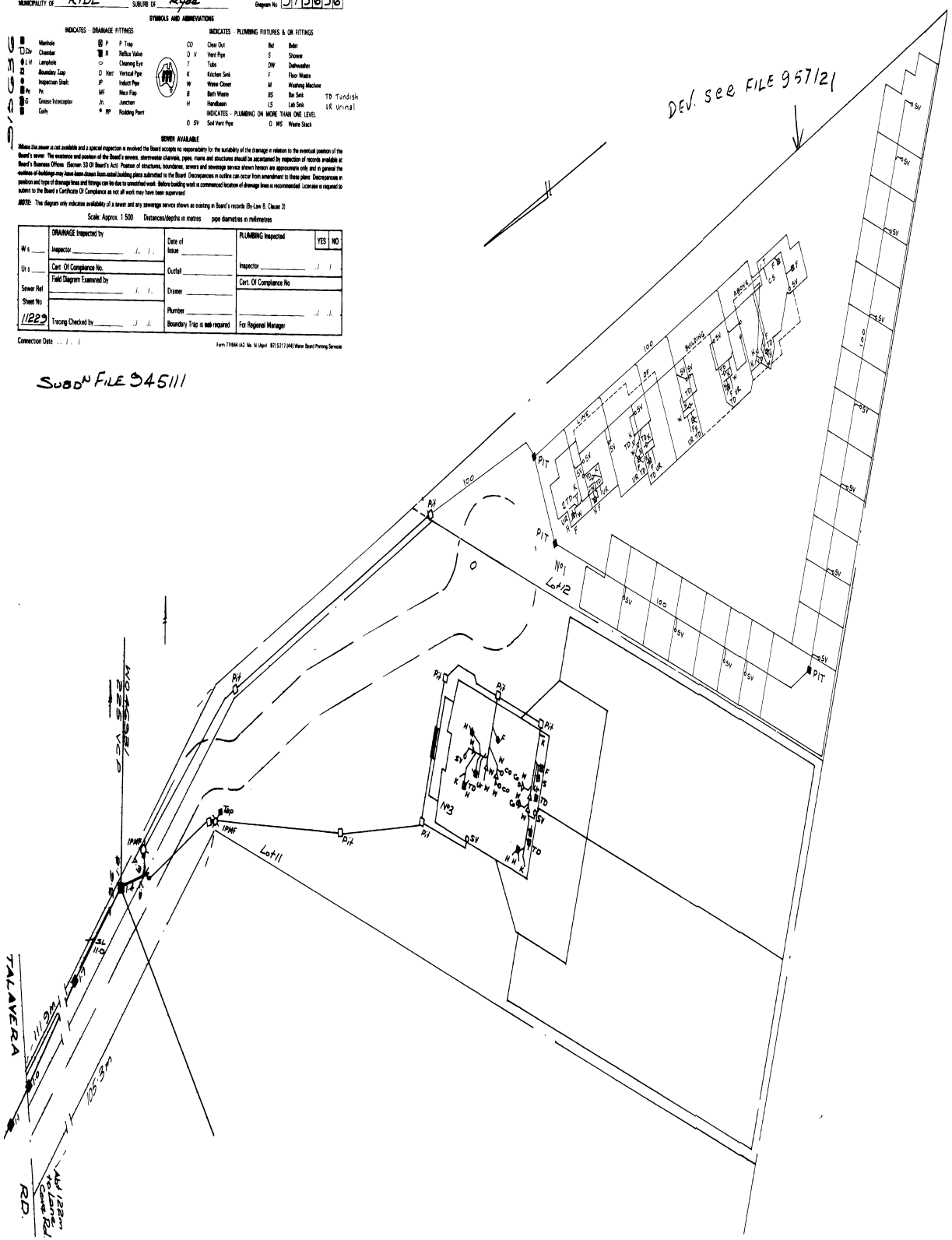
Where the sewer is not available and a special inspection is involved the Board accepts no responsibility for the suitability of the drainage in relation to the eventual position of the Board's sewer. The location and position of the Board's sewers, stormwater overflows, pipes, manholes and structures should be ascertained by inspection of records available at Board's Business Office. Section 52(2) Board's Act. Position of structures, boundaries, sewers and drainage service shown herein are approximations only and in general the number of buildings may have been shown from aerial building plans submitted to the Board. Occurrences in sufficient can occur from amendments to these plans. Discrepancies in location and type of drainage lines and fittings can be due to unrecorded work. Before building work is commenced location of drainage lines is recommended. Licenses are required to access to the Board's Certificate of Compliance as not all work may have been approved.

**NOTE:** This diagram only indicates availability of a sewer and any sewerage service shown as existing is Board's records (By Law 8, Clause 3)

Scale: Approx. 1:500 Distances/depths in metres pipe diameters in millimetres

<b>DRAINAGE</b> Inspected by _____ Date of Issue _____	<b>PLUMBING</b> Inspected _____ YES NO
W/s Inspector <u>J. J.</u>	Date of Issue _____
U/s Cert. Of Compliance No. _____	Outfall _____
Field Diagram Examined by _____	Inspector _____ J. J.
Sewer Ref. _____	Cert. Of Compliance No. _____
Sheet No. _____	Plumber _____ J. J.
Tracing Checked by _____ J. J.	Boundary Trap is not required For Regional Manager

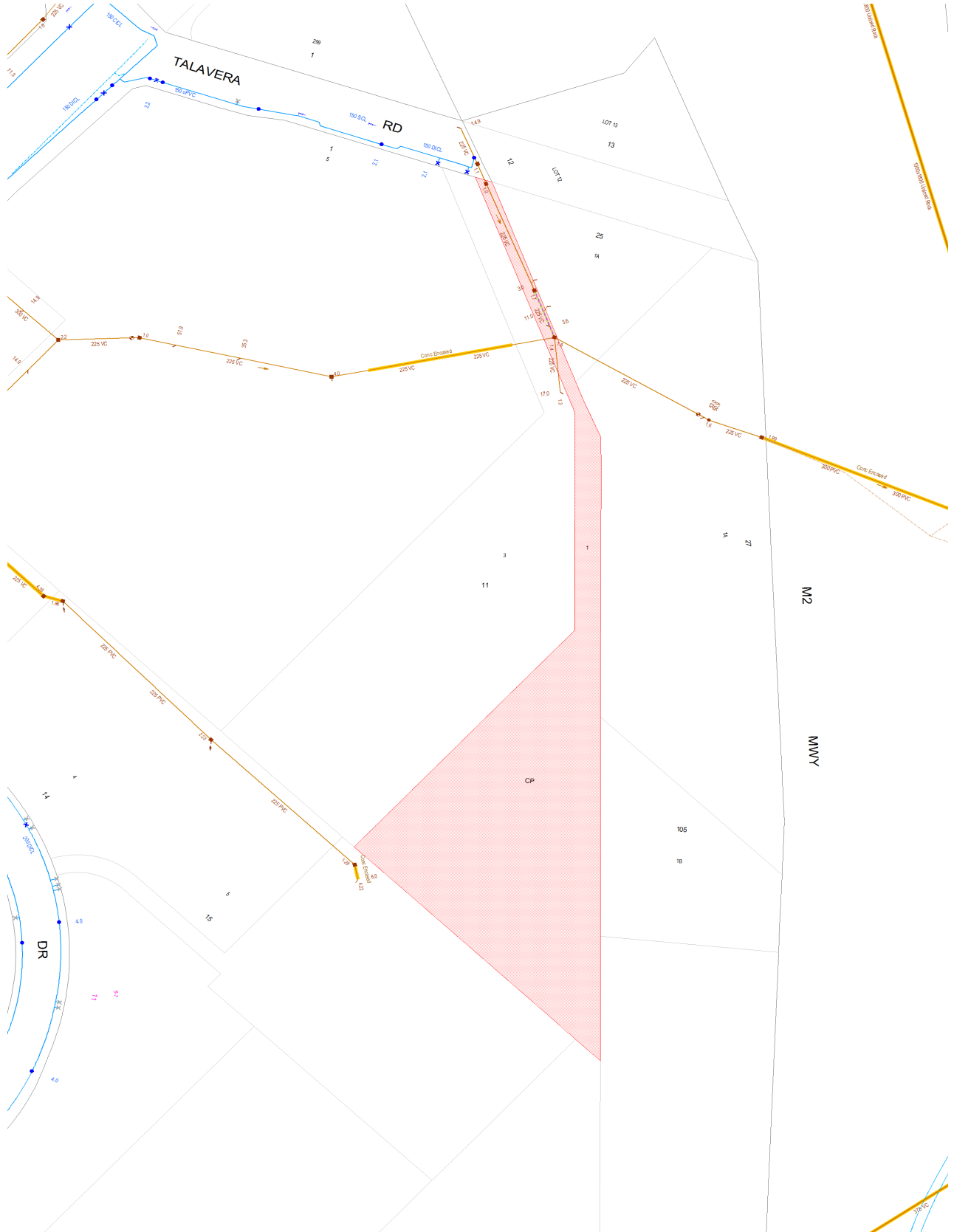
Form 7769M (A2) No. 9 (April 83) 5273 (M) New South Wales Planning Services



**Disclaimer**

The information in this diagram shows the private wastewater pipes on this property. It may not be accurate or to scale and may not show our pipes, structures or all property boundaries. If you'd like to see these, please buy a **Service location print**.

**Service Location Print**  
Application Number: 8002901781



Document generated at 25-10-2023 10:30:28 AM

**Disclaimer**

The information on this print shows if we provide any water, wastewater or stormwater services to this property. It may not be accurate or to scale. If you'd like to see the location of private wastewater pipes on the property, please buy a **Sewer service diagram**.

# Asset Information

## Legend

Sewer		Property Details	
Sewer Main (with flow arrow & size type text)		Boundary Line	
Disused Main		Easement Line	
Rising Main		House Number	
Maintenance Hole (with upstream depth to invert)		Lot Number	
Sub-surface chamber		Proposed Land	
Maintenance Hole with Overflow chamber		Sydney Water Heritage Site (please call 132 092 and ask for the Heritage Unit)	
Ventshaft EDUCT			
Ventshaft INDUCT			
Property Connection Point (with chainage to downstream MH)			
Concrete Encased Section			
Terminal Maintenance Shaft			
Maintenance Shaft			
Rodding Point			
Lamphole			
Vertical			
Pumping Station			
Sewer Rehabilitation			
Pressure Sewer		Water	
Pressure Sewer Main		WaterMain - Potable (with size type text)	
Pump Unit (Alarm, Electrical Cable, Pump Unit)		Disconnected Main - Potable	
Property Valve Boundary Assembly		Proposed Main - Potable	
Stop Valve		Water Main - Recycled	
Reducer / Taper		Special Supply Conditions - Potable	
Flushing Point		Special Supply Conditions - Recycled	
		Restrained Joints - Potable	
		Restrained Joints - Recycled	
		Hydrant	
		Maintenance Hole	
		Stop Valve	
		Stop Valve with By-pass	
		Stop Valve with Tapers	
		Closed Stop Valve	
		Air Valve	
		Valve	
		Scour	
		Reducer / Taper	
		Vertical Bends	
		Reservoir	
		Recycled Water is shown as per Potable above. Colour as indicated	
Vacuum Sewer		Private Mains	
Pressure Sewer Main		Potable Water Main	
Division Valve		Recycled Water Main	
Vacuum Chamber		Sewer Main	
Clean Out Point		Symbols for Private Mains shown grey	
Stormwater			
Stormwater Pipe			
Stormwater Channel			
Stormwater Gully			
Stormwater Maintenance Hole			

### Disclaimer

The information on this print shows if we provide any water, wastewater or stormwater services to this property. It may not be accurate or to scale. If you'd like to see the location of private wastewater pipes on the property, please buy a **Sewer service diagram**.

## Pipe Types

<b>ABS</b>	Acrylonitrile Butadiene Styrene	<b>AC</b>	Asbestos Cement
<b>BRICK</b>	Brick	<b>CI</b>	Cast Iron
<b>CICL</b>	Cast Iron Cement Lined	<b>CONC</b>	Concrete
<b>COPPER</b>	Copper	<b>DI</b>	Ductile Iron
<b>DICL</b>	Ductile Iron Cement (mortar) Lined	<b>DIPL</b>	Ductile Iron Polymeric Lined
<b>EW</b>	Earthenware	<b>FIBG</b>	Fibreglass
<b>FL BAR</b>	Forged Locking Bar	<b>GI</b>	Galvanised Iron
<b>GRP</b>	Glass Reinforced Plastics	<b>HDPE</b>	High Density Polyethylene
<b>MS</b>	Mild Steel	<b>MSCL</b>	Mild Steel Cement Lined
<b>PE</b>	Polyethylene	<b>PC</b>	Polymer Concrete
<b>PP</b>	Polypropylene	<b>PVC</b>	Polyvinylchloride
<b>PVC - M</b>	Polyvinylchloride, Modified	<b>PVC - O</b>	Polyvinylchloride, Oriented
<b>PVC - U</b>	Polyvinylchloride, Unplasticised	<b>RC</b>	Reinforced Concrete
<b>RC-PL</b>	Reinforced Concrete Plastics Lined	<b>S</b>	Steel
<b>SCL</b>	Steel Cement (mortar) Lined	<b>SCL IBL</b>	Steel Cement Lined Internal Bitumen Lined
<b>SGW</b>	Salt Glazed Ware	<b>SPL</b>	Steel Polymeric Lined
<b>SS</b>	Stainless Steel	<b>STONE</b>	Stone
<b>VC</b>	Vitrified Clay	<b>WI</b>	Wrought Iron
<b>WS</b>	Woodstave		

## Further Information

Please consult the Dial Before You Dig enquiries page on the Sydney Water website.

**For general enquiries please call the Customer Contact Centre on 132 092**

**In an emergency, or to notify Sydney Water of damage or threats to its structures, call 13 20 90 (24 hours, 7 days)**

### Disclaimer

The information on this print shows if we provide any water, wastewater or stormwater services to this property. It may not be accurate or to scale. If you'd like to see the location of private wastewater pipes on the property, please buy a **Sewer service diagram**.