

METROPOLITAN WATER SEWERAGE AND DRAINAGE BOARD

SEWERAGE SERVICE DIAGRAM **FORREST**

Municipality of **LEICHHARDT**

No. **740996**

- ☒ Boundary Trap
- Pit
- ☒ G.I. Grease Interceptor
- ☒ Gully
- ☒ P.T. P. Trap
- ☒ R.S. Reflux Sink

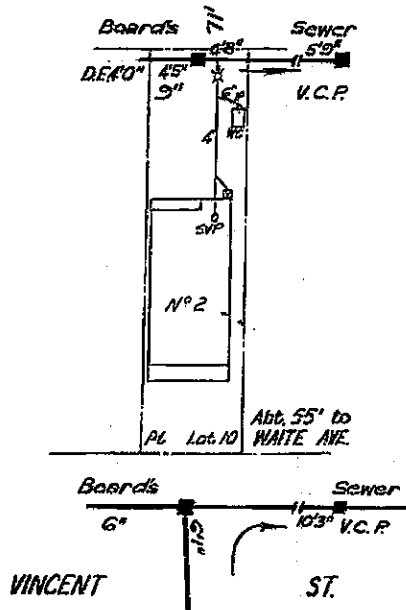
- SYMBOLS AND ABBREVIATIONS**
- R.V. Reflux Valve
 - Cleaning Eye
 - Vert. Vertical Pipe
 - V.P. Vent. Pipe
 - S.V.P. Soil Vent. Pipe
 - D.C.C. Down Cast Cowl
 - I.P. Induct Pipe
 - M.F. Mica Flap
 - T. Tubs
 - K.S. Kitchen Sink
 - W.C. Water Closet
 - B.W. Bath Waste

- Bsn. Basin
- Shr. Shower
- W.I.P. Wrought Iron Pipe
- C.I.P. Cast Iron Pipe
- F. W. Floor Waste
- W.M. Washing Machine

Scale: 40 Feet To An Inch

SEWER AVAILABLE

Where the sewer is not available and a special inspection is involved the Board accepts no responsibility for the suitability of the drainage in relation to the eventual position of the Board's Sewer



RATE No. _____ W.C.s _____ U.C.s _____ 19__

SHEET No. **135** OFFICE USE ONLY For Engineer House Services

W.C. Bth. Shr. Bsn. K.S. T. Plg. Dre. Int.	DRAINAGE		BRANCH OFFICE Date Outfall Drainer Plumber	PLUMBING	
	Supervised by	Date		Supervised by	Date
	Inspector	/ /	HL LL	Inspector	/ /
	Chief Inspector	/ /			

312-317

NOTE This diagram only indicates availability of a sewer and any sewerage service shown as existing in Sydney Water's records. The existence and position of Sydney Water's sewers, stormwater channels, pipes, mains and structures should be ascertained by inspection of maps available at any of Sydney Water's Customer Centres. Position of structures, boundaries, sewers and sewerage services shown hereon are approximately only.